



On-line PICASSO PROJECT

**Comprehensive Catalogue Raisonné
Prof. Dr. Enrique Mallen**

1929

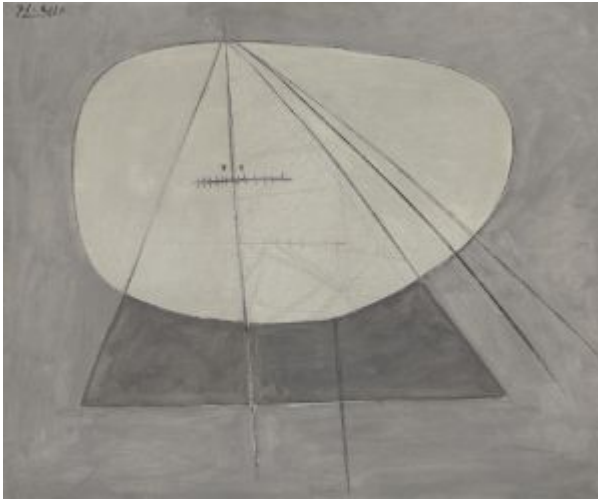


Figure. Paris. January/1929. Oil on canvas. 54 x 65,1 cm. Christie's. #287, 2046, 11/06/08.

OPP.29:013; P.IV:138; PP.29:001; Z.VII:244; PA.19f:108p

Tête de femme. Paris. Early/1929. Oil on wood. [69 x 56] 65,8 x 48,5 cm. The Kreeger Museum, Washington, DC.

OPP.29:015; PP.29:003; Z.VII:237; PA.19f:135p





Femme assise. Paris. Early/1929. Oil on canvas. [92 x 73] 91 x 73 cm. Sotheby's. #1018, N10368, 06/29/20. Formerly Peter Nahum At The Leicester Galleries; Sotheby's. #32, L02005, 06/24/02.

OPP.29:022; PP.29:011; Z.VII:249; AV.95*:n/a; BU.71a*:n/a; BU.73*:n/a; EE.71*:n/a; GH.64*:n/a; PA.19f:116p; PO.98*:86p; PP.99*:n/a

Femme au fauteuil rouge. Paris. Early/1929. Oil on canvas. 64,5 x 54 cm. Musée Picasso, Paris. Dation 1979.

OPP.29:024; MPP:112; P.IV:166; PP.29:013; Z.VII:291; GP.96:161p; JO.06*:n/a; LN.07*:n/a; MP.85:98; PA.19f*:58; PA.79a*:165; SD.05*:54; SP.04*:n/a; TK.04*:n/a; UP.00:600; UW.91*:28





Femme dans un fauteuil rouge. Paris. Early/1929. Oil on canvas. 65,1 x 54 cm. The Menil Family Collection, Houston. Formerly Flechtheim Collection.

OPP.29:025; P.IV:169; PP.29:014; Z.VII:294;
HO.16a:166p; JC.40:135p; JL.14*:44; MA.17*:77p;
MA.20a*:n/a; PA.19f*:57; RP.60*:121; WW.94*:99;
YB.08*:36

Tête de jeune fille. Paris. Early/1929. Oil on canvas. 61 x 38 cm. Kunstmuseum Bern. Hermann und Margrit Rupf-Stiftung.

OPP.29:026; P.IV:174; PP.29:015; Z.VII:293; AC.81:112p;
BA.03a*:138; BS.55:327p; CG.93:73; CH.10*:170p; HJ.83:23p;
HJ.96:23p; KB.01*:100; PA.19f:118p





La demoiselle. Paris. Early/1929. Oil on canvas. 54 x 45,5 cm. Moderna Museet, Stockholm. (Inv NM.6084).

OPP.29:027; P.IV:168; PP.29:016; Z.VII:289;
AB.05a*:16; AB.05b*:107; BA.23*:140p; BS.12*:91;
JB.12:7; JL.14*:46; KZ.32*:182; MA.17*:79p; NC.11:10;
PA.19f*:52; TB.10*:61; TC.13:5.11; UW.91*:27

Femme au fauteuil. Paris. [20-January/1929].
Charcoal on canvas. 100 x 81 cm. Private collection.

OPP.29:083; LE.07*:39





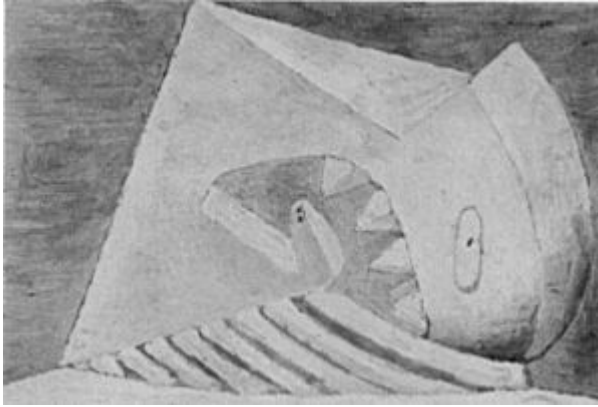
Femme dans un fauteuil. Paris. 29-January/1929. Pencil. 27,8 x 20,8 cm. Musée Picasso, Paris. Dation 1979.

OPP.29:014; MPP:1031; PP.29:002; Z.VII:241; PA.19f*:61; RK.01*:n/a; TK.04*:n/a; UW.91*:23

Buste de femme (Olga). Paris. February/1929. Oil on canvas. 73 x 50,2 [60] cm. Christie's. #37, 2594, 11/07/12. Formerly Ralph F. Colin Collection, NY.

OPP.29:009; P.IV:143; PP.29:009; Z.VII:247; GP.32*:183; KZ.32*:183; NO.50*:68; NY.30f*:n/a; NY.38a*:18; NY.39f*:n/a; NY.60a*:47; NY.75b*:n/a; PA.19f*:56; PA.30d*:n/a; PR.31*:n/a; RI.41*:182; TB.10*:183; WW.94*:n/a





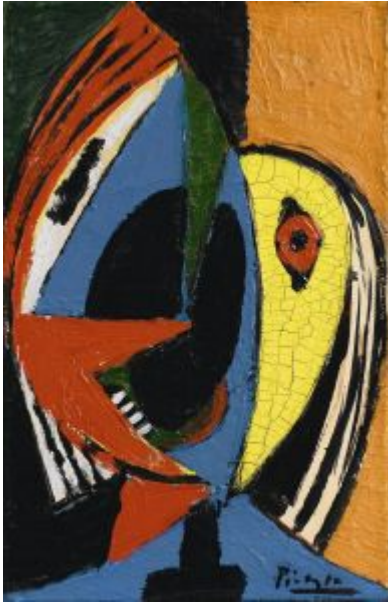
Tête. Paris. February/1929. Oil on canvas [OIC].
16 x 24 cm. Private collection.

OPP.29:018; P.IV:164; PP.29:007; DD.61:213

Buste de femme à l'autoportrait. Paris.
February/1929. Oil on canvas. 71 x 60,5 cm. Private
collection, London. Courtesy McClain Gallery.

OPP.29:019; P.IV:148; PP.29:008; Z.VII:248;
AM.94:30; AT.84:19; EC.02:450; GG.87:9p;
GP.32*:n/a; JL.71:84p; JR.07:n/a; LO.22:39p;
LU.93:26; NM.95:95p; NY.30f*:n/a; NY.42g*:9;
NY.43g*:n/a; PA.17b*:183; PA.19f*:55;
PA.30d*:n/a; PB.21:147; PD.09:264p; PH.96:27;
RP.60*:122; RP.67a:15; RP.81:12.2; SS.76:194;
TC.13:I.5; UP.00:603; WR.80*:272p; WR.96:329p;
WW.91:335p; WW.94*:101



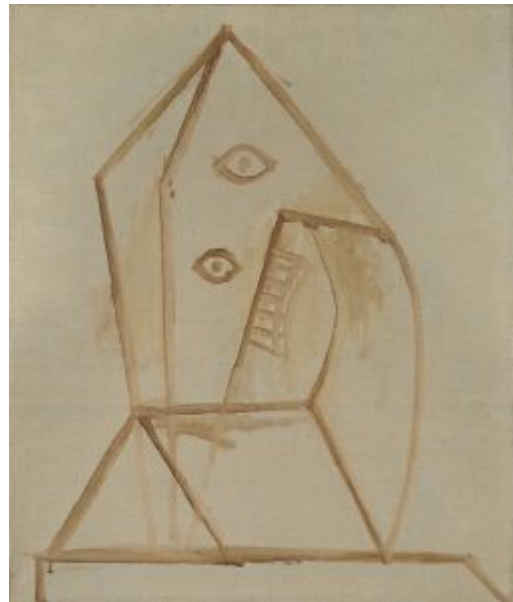


Tête de femme. Paris. [February]/1929. Oil on canvas. 22 x 14 cm. Sotheby's. #4, L17007, 06/21/17.

OPP.29:020; JM.93:74p; PA.19f:133p; RS.88:109p

Tête sur fond beige. Paris. February/1929. Oil on canvas. 55 x 46 cm. Museo Picasso, Málaga. Donation Christine Ruiz-Picasso.

OPP.29:070; MPM:1.4.A; P.IV:167; DP.20*:63; GS.03:1.14; MA.17*:76p; NC.17*:72; PA.19f*:53





Deux chevaux traînent un cheval mort (José Delgado alias Pepe Illo, Tauromaquia o el arte de torear a caballo y a pie). Paris. 3-February/1929. Etching. 28,2 x 38,2 cm. Musée Picasso, Paris. Dation 1979.

OPP.29:060; MPP:2111; PA.93a*:51

Deux chevaux traînant un cheval tué. Paris. 3-February/1929. Copper plate for *Deux chevaux traînent un cheval mort (José Delgado alias Pepe Illo, Tauromaquia o el arte de torear a caballo y a pie)*. 19,3 x 27,8 cm. Musée Picasso, Paris. Don des héritiers Picasso en 1982.

OPP.29:149; MPP:1982.34





Tête. Paris. 10-February/1929. Oil on canvas. S/U. Private collection.

OPP.29:017; P.IV:139; PP.29:005; Z.VII:243; PA.19f*:54

Monument: tête de femme. Paris. [Spring] 11-February/1929. Oil on canvas. 65 x 54 cm. Michael and Judy Steinhardt Collection, NY. Courtesy Richard L. Feigen & Co., New York. Formerly Christie's. #73, 6361, 02/06/01.

OPP.29:011; P.IV:170; PP.29:017; Z.VII:290; AB.46:165p; BS.55:395p; CR.84:157p; EC.09*:13; GB.87:117; JL.51:75; MA.17*:80p; PA.19f:112p; RJ.03:27; RP.81:12.4; ST.65*:42; TC.13:2.2; TC.13:5.3; TG.94:201p; UP.00:599; UW.93:35a





Visage. Paris. 12-February/1929. Pencil, charcoal & oil on canvas. 65 x 54 cm. Catherine Hutin-Blay Collection, Paris. Formerly Jacqueline Roque Picasso Collection.

OPP.29:010; P.IV:163; PP.29:006; Z.VII:242;
BA.03a*:131; JL.14*:47; MG.03b*:17; PA.19f:112p;
WW.94*:98

Étude pour Buste de Femme. Paris. 25-February/1929~12-January/1930. Graphite on Ingres paper. 23,5 x 30,5 cm. Musée Picasso, Paris. Dation 1979. Sketchbook 18.

OPP.29:106; MPP:1875.13r; P.IV:147;
BL.96:38.13r



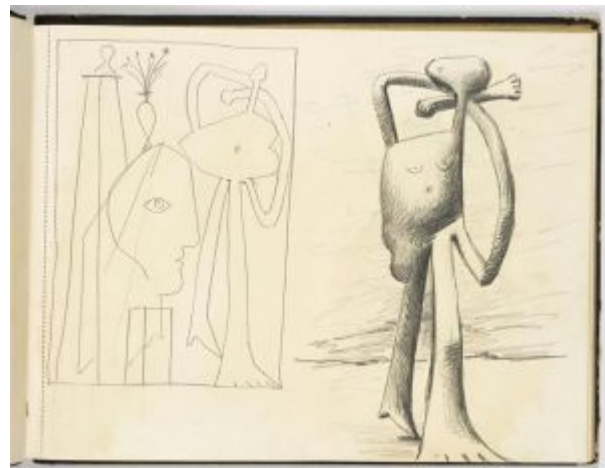


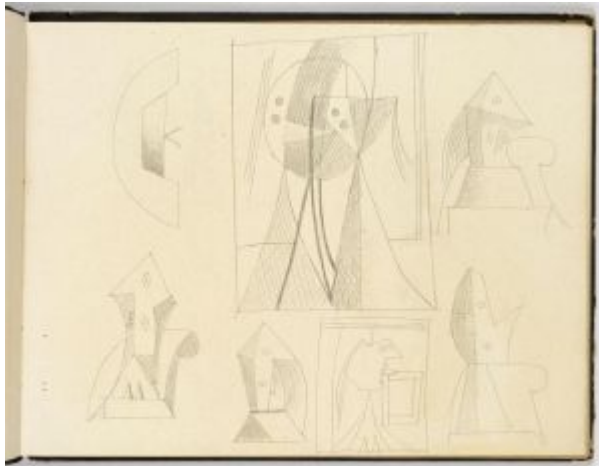
Études de femme, sculpture et vase de fleurs.
Paris. 25-February/1929~12-January/1930.
Graphite on Ingres paper. 23,5 x 30,5 cm. Musée
Picasso, Paris. Dation 1979. Sketchbook 18.

OPP.29:030; MPP:1875.26r; P.IV:155;
PP.29:027; Z.VII:258; AB.05a:81; BL.96:38.26r;
JC.01a*:100a; PA.19f*:62

Études de Femme, sculpture et vase de
fleurs. Paris. 25-February/1929~12-
January/1930. Graphite on Ingres paper.
23,5 x 30,5 cm. Musée Picasso, Paris.
Dation 1979. Sketchbook 18.

OPP.29:079; MPP:1875.25r; P.IV:154;
AB.05a:80; BL.96:38.25r



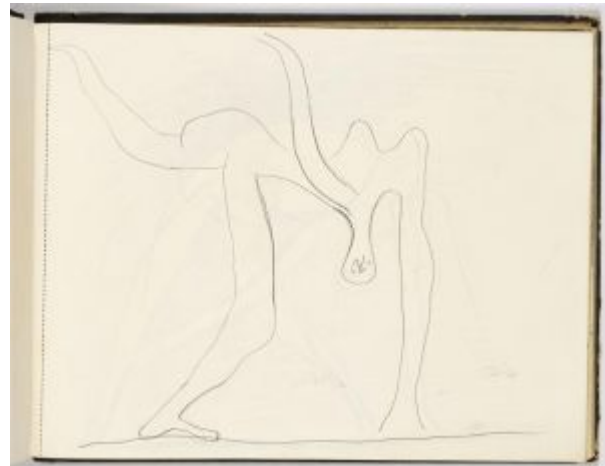


Detail de la bouche pour un projet de sculpture; études de peintures dont: Femme au fauteuil rouge. Paris. 25-February/1929~12-January/1930. Graphite on Ingres paper. 24,5 x 31 cm. Musée Picasso, Paris. Dation 1979. Sketchbook 18.

OPP.29:093; MPP:1875.04r; P.IV:106;
BL.96:38.04r

Acrobate. Paris. 25-February/1929~12-January/1930. Graphite on Ingres paper. 23,5 x 30,5 cm. Musée Picasso, Paris. Dation 1979. Sketchbook 18.

OPP.29:096; MPP:1875.30r; P.IV:202;
BL.96:38.30r





Acrobate. Paris. 25-February/1929~12-January/1930. Graphite on Ingres paper. 23,5 x 30,5 cm. Musée Picasso, Paris. Dation 1979. Sketchbook 18.

OPP.29:097; MPP:1875.31r; P.IV:203;
BL.96:38.31r

Acrobate. Paris. 25-February/1929~12-January/1930. Graphite on Ingres paper. 23,5 x 30,5 cm. Musée Picasso, Paris. Dation 1979. Sketchbook 18.

OPP.29:098; MPP:1875.32r; P.IV:204;
BL.96:38.32r; PA.17b*:120





Acrobate. Paris. 25-February/1929~12-January/1930. Graphite on Ingres paper. 23,5 x 30,5 cm. Musée Picasso, Paris. Dation 1979. Sketchbook 18.

OPP.29:099; MPP:1875.29r; P.IV:201;
BL.96:38.29r

Étude de tête pour un projet de sculpture; étude pour un projet de peinture de femme dans un fauteuil. Paris. 25-February/1929~12-January/1930. Graphite on Ingres paper. 23,5 x 30,5 cm. Musée Picasso, Paris. Dation 1979. Sketchbook 18.

OPP.29:104; MPP:1875.05r; P.IV:142;
BL.96:38.05r





Étude pour Buste de femme; étude d'un projet de sculpture avec profil et détail de buste. Paris. 25-February/1929~12-January/1930. Graphite on Ingres paper. 23,5 x 30,5 cm. Musée Picasso, Paris. Dation 1979. Sketchbook 18.

OPP.29:105; MPP:1875.12r; P.IV:144;
TG.94:205p; BL.96:38.12r

Étude pour Buste de jeune fille. Paris. 25-February/1929~12-January/1930. Graphite on Ingres paper. 23,5 x 30,5 cm. Musée Picasso, Paris. Dation 1979. Sketchbook 18.

OPP.29:107; MPP:1875.14r; P.IV:146;
BL.96:38.14r





Quatre études pour un projet de sculpture.
Paris. 25-February/1929~12-January/1930.
Graphite on Ingres paper. 23,5 x 30,5 cm. Musée
Picasso, Paris. Dation 1979. Sketchbook 18.

OPP.29:108; MPP:1875.17r; P.IV:158;
BL.96:38.17r; TG.94:205p

Deux études pour un projet de sculpture. Paris. 25-February/1929~12-
January/1930. Graphite on Ingres paper.
23,5 x 30,5 cm. Musée Picasso, Paris.
Dation 1979. Sketchbook 18.

OPP.29:109; MPP:1875.19r; P.IV:159;
PP.29:025; Z.VII:251; BL.96:38.19r





Acrobate. Paris. 25-February/1929~12-January/1930. Graphite on Ingres paper. 23,5 x 30,5 cm. Musée Picasso, Paris. Dation 1979. Sketchbook 18.

OPP.29:111; MPP:1875.33r; P.IV:205; BL.96:38.33r

Études de la tête et des mains tenant un voild de Grande Baigneuse. Paris. 25-February/1929~12-January/1930. Graphite on Ingres paper. 23,5 x 30,5 cm. Musée Picasso, Paris. Dation 1979. Sketchbook 18.

OPP.29:114; MPP:1875.46r; P.IV:151; BL.96:38.46r



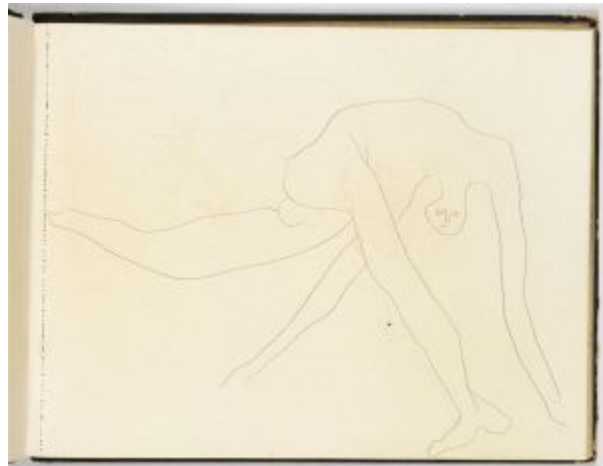


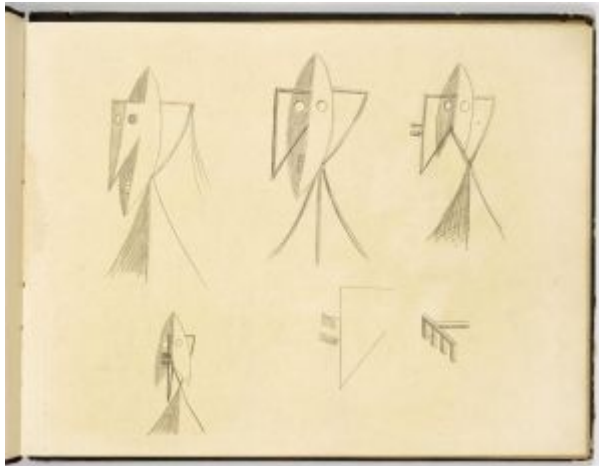
Acrobate. Paris. 25-February/1929~12-January/1930. Graphite on Ingres paper. 23,5 x 30,5 cm. Musée Picasso, Paris. Dation 1979. Sketchbook 18.

OPP.29:118; MPP:1875.27r; P.IV:199;
BL.96:38.27r

Acrobate. Paris. 25-February/1929~12-January/1930. Graphite on Ingres paper. 23,5 x 30,5 cm. Musée Picasso, Paris. Dation 1979. Sketchbook 18.

OPP.29:119; MPP:1875.28r; P.IV:200;
BL.96:38.28r; TE.21*:179





Études de tête pour un projet de sculpture.

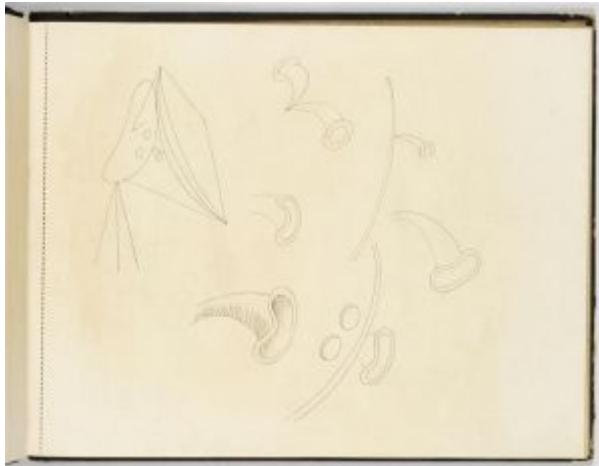
Paris. 25-February/1929~12-January/1930.
Graphite on Ingres paper. 23,5 x 30,5 cm. Musée
Picasso, Paris. Dation 1979. Sketchbook 18.

OPP.29:120; MPP:1875.02r; BL.96:38.02r;
TU.15:110p

Étude de femme couchée. Paris. 25-
February/1929~12-January/1930. Graphite
on Ingres paper. 23,5 x 30,5 cm. Musée
Picasso, Paris. Dation 1979. Sketchbook
18.

OPP.29:126; MPP:1875.15r; BL.96:38.15r





Études de détails de la tête pour un projet de sculpture. Paris. 25-February/1929~12-January/1930. Graphite on Ingres paper. 23,5 x 30,5 cm. Musée Picasso, Paris. Dation 1979. Sketchbook 18.

OPP.29:127; MPP:1875.16r; BL.96:38.16r

Quatres études de détails pour un projet de sculpture. Paris. 25-February/1929~12-January/1930. Graphite on Ingres paper. 23,5 x 30,5 cm. Musée Picasso, Paris. Dation 1979. Sketchbook 18.

OPP.29:128; MPP:1875.18r; BL.96:38.18r





Etude de femme couchée. Paris. 25-February/1929~12-January/1930. Graphite on Ingres paper. 23,5 x 30,5 cm. Musée Picasso, Paris. Dation 1979. Sketchbook 18.

OPP.29:129; MPP:1875.20r; BL.96:38.20r

Étude de tête pour un projet de Femme dans un fauteuil. Paris. 25-February/1929~12-January/1930. Graphite on Ingres paper. 23,5 x 30,5 cm. Musée Picasso, Paris. Dation 1979. Sketchbook 18.

OPP.29:130; MPP:1875.21r; BL.96:38.21r





1ère de couverture. Paris. 25-February/1929~12-January/1930. Mixed media. 24,5 x 31 cm. Musée Picasso, Paris. Dation 1979. Sketchbook 18.

OPP.29:131; MPP:1875.c1; BL.96:38.c1

Étude de tête sur un socle pour un projet de sculpture, étude de femme au voile. Paris. 25-February/1929~12-January/1930. Graphite on Ingres paper. 23,5 x 30,5 cm. Musée Picasso, Paris. Dation 1979. Sketchbook 18.

OPP.29:132; MPP:1875.22r; BL.96:38.22r



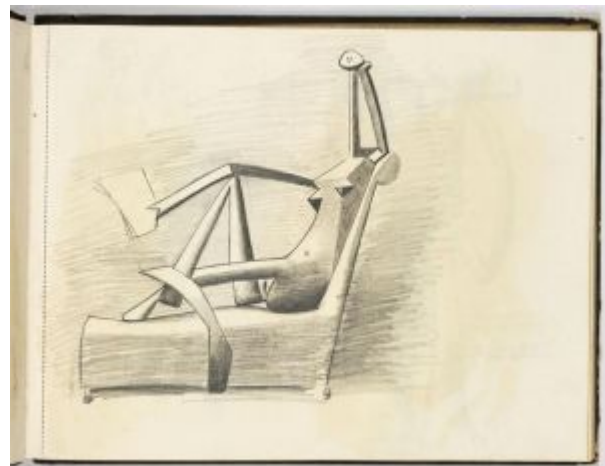


Nu étendu dans l'atelier avec détails du buste et du dos. Paris. 25-February/1929~12-January/1930. Graphite on Ingres paper. 23,5 x 30,5 cm. Musée Picasso, Paris. Dation 1979. Sketchbook 18.

OPP.29:133; MPP:1875.23r; BL.96:38.23r

Nu allongé sur un sofa. Paris. 25-February/1929~12-January/1930. Graphite on Ingres paper. 23,5 x 30,5 cm. Musée Picasso, Paris. Dation 1979. Sketchbook 18.

OPP.29:134; MPP:1875.24r; PP.29:024; Z.VII:250; BL.96:38.24r



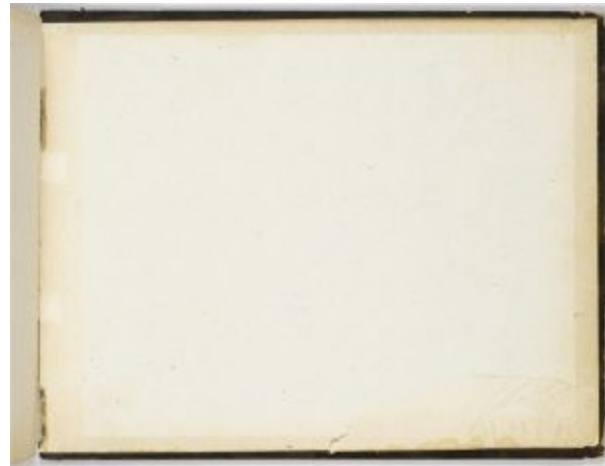


Études de tête pour un projet de sculpture. Paris. 25-February/1929~12-January/1930. Graphite on Ingres paper. 23,5 x 30,5 cm. Musée Picasso, Paris. Dation 1979. Sketchbook 18.

OPP.29:136; MPP:1875.03r; BL.96:38.3r

3ème de couverture. Paris. 25-February/1929~12-January/1930. Mixed media. 24,5 x 31 cm. Musée Picasso, Paris. Dation 1979. Sketchbook 18.

OPP.29:137; MPP:1875.c3; BL.96:38.c3





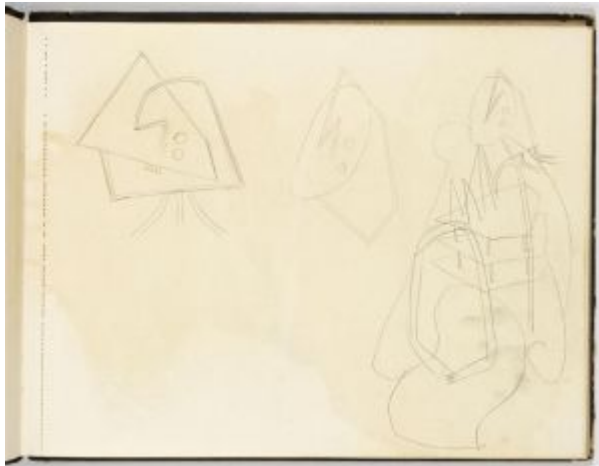
4ème de couverture. Paris. 25-February/1929~12-January/1930. Mixed media. 24,5 x 31 cm. Musée Picasso, Paris. Dation 1979. Sketchbook 18.

OPP.29:139; MPP:1875.c4; BL.96:38.c4

Six études pour un projet de sculpture. Paris. 25-February/1929~12-January/1930. Graphite on Ingres paper. 23,5 x 30,5 cm. Musée Picasso, Paris. Dation 1979. Sketchbook 18.

OPP.29:140; MPP:1875.11r; BL.96:38.11r



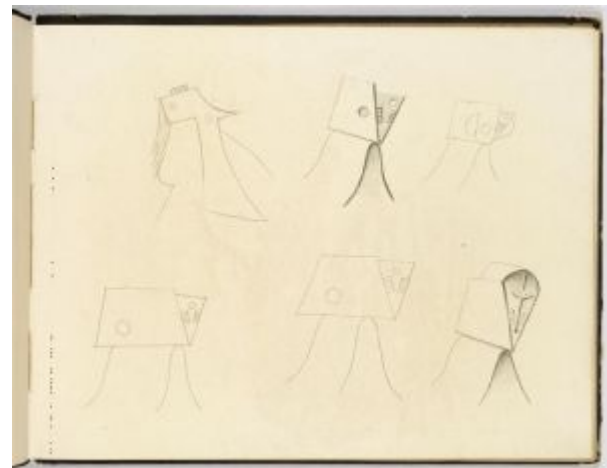


Trois études pour un projet de sculpture. Paris. 25-February/1929~12-January/1930. Graphite on Ingres paper. 23,5 x 30,5 cm. Musée Picasso, Paris. Dation 1979. Sketchbook 18.

OPP.29:145; MPP:1875.09r; BL.96:38.9r

Études de tête pour des projets de peinture et de sculpture. Paris. 25-February/1929~12-January/1930. Graphite on Ingres paper. 23,5 x 30,5 cm. Musée Picasso, Paris. Dation 1979. Sketchbook 18.

OPP.29:146; MPP:1875.06r; BL.96:38.6r



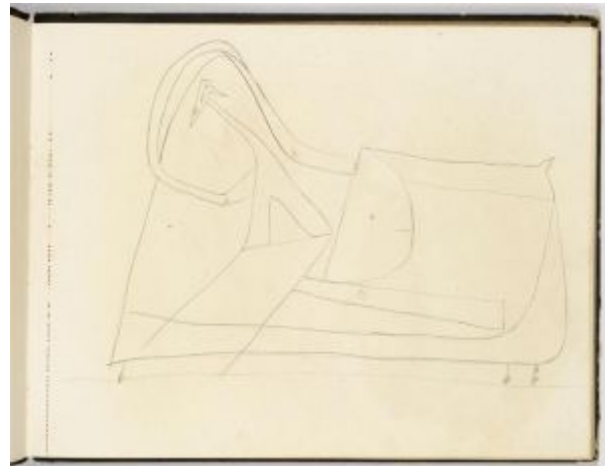


Deux études pour un projet de sculpture. Paris. 25-February/1929~12-January/1930. Graphite on Ingres paper. 24,5 x 31 cm. Musée Picasso, Paris. Dation 1979. Sketchbook 18.

OPP.29:147; MPP:1875.07r; BL.96:38.7r;
MA.22b*:56

Étude de femme couchée. Paris. 25-February/1929~12-January/1930. Graphite on Ingres paper. 23,5 x 30,5 cm. Musée Picasso, Paris. Dation 1979. Sketchbook 18.

OPP.29:148; MPP:1875.08r; BL.96:38.8r





Buste de femme. Paris. March/1929. Oil on canvas. 73 x 60 cm. Christie's. #39, 1722, 11/08/06.

OPP.29:023; P.IV:145; PP.29:012; Z.VII:245; LG.02*:212p; NY.30f*:n/a; NY.57e*:33; NY.65d*:10; PA.19f:116p; PA.30d*:n/a

Femme dans un fauteuil. Paris. 2-March/1929. Oil on canvas. [150 x 80] [81,2 x 50,4] 81,2 x 58 cm. Sotheby's. #40, N09415, 11/05/15. Formerly Private collection, Madrid; Christie's. #82, 1722, 11/08/06.

OPP.29:021; PP.29:010; Z.VII:246; JC.01a*:97; JM.42:364; PA.19f:116p; PD.65:136p; TO.64*:104





Femme assise. Paris. Spring/1929 [1931]. Bronze [Cast possibly 1937~1946]. 42,5 x 16,5 x 25 cm. Musée Picasso, Paris. Dation 1979.

OPP.29:016; MPP:287; P.IV:236; PP.29:033; WS:106.II; JC.01a*:98; MP.85:309; PA.19f*:60; PA.79a*:208; PD.06*:n/a; RB.99:40p; TE.21*:105; TG.02:56p; TK.04*:n/a; TU.15*:37; YB.99*:36

Femme au voile. Paris. Spring/1929. Oil on canvas. [40,9 x 26,5] [41 x 27] 41,3 x 26,7 cm. Sotheby's. #441, 6489, 11/04/93.

OPP.29:034; P.IV:171; PP.29:031; Z.VII:254; BU.73*:480; HT.34*:66; PA.19f:124p; RE.58*:n/a; UW.91*:24; WW.91:327p





Femme assise. Paris. Spring/1929 [1931]. Bronze [Cast possibly 1937~1946]. 80,5 x 20 x 22 cm. Musée Picasso, Paris. Dation 1979.

OPP.29:069; MPP:286; P.IV:238; PP.29:032; WS:104.II;
MP.85:308; ND.01*:45; PA.19f*:59; PA.79a*:207; TE.21*:106;
TU.15*:38

La femme au jardin. Paris.
Spring/1929~Spring/1930 [~1931]. Iron, soldered &
painted white. 206 x 117 x 85 cm. Musée Picasso,
Paris. Dation 1979.

OPP.29:005; MPP:267; PP.29:077; WS:72.I;
EC.02:481; EC.09:35; GB.87:129; GC.96:205p;
GP.32*:n/a; GP.96:171p; JR.07:376p; MA.17*:85p;
MA.22b*:60; MI.18*:n/a; MP.85:310; MS.00b:470p;
NC.10:63; PA.19e*:13; PA.79a*:174; PD.09:271p;
RJ.03:85; RP.11:25p; TG.94:199p; TH.75:138;
TU.15*:41; UP.00:614; WW.91:322p; YB.08:83p



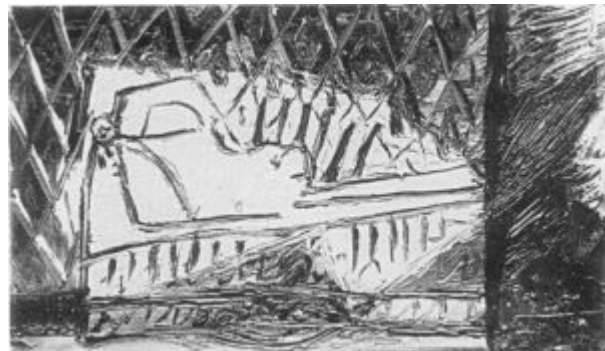


Femme couchée. Paris. April/1929. Oil on canvas. 40 x 61 cm. Catherine Hutin-Blay Collection, Paris. Formerly Jacqueline Roque Picasso Collection.

OPP.29:003; P.IV:177; PP.29:021; Z.VII:260; BS.12:144p; GB.87:122; GL.84*:17; GP.96:158p; JF.03:7.11; MM.06*:16; MM.85a*:15; TO.14*:30; TO.99*:40; UP.00:601; WW.91:328p

Nu allongé. Paris. 3-April/1929. Oil on canvas [OiC]. 19 x 33 cm. Private collection.

OPP.29:028; P.IV:179; PP.29:018; Z.VII:269





Nu allongé. Paris. 3-April/1929. Oil on canvas [OiC]. 16 x 24 cm. Private collection.

OPP.29:163; PP.29:020; DD.61:213p

Femme couchée. Paris. 4-April/1929. Oil on canvas. 19,2 x 35 cm. Christie's. #1A, 14183, 05/15/17.

OPP.29:123; PP.29:022; Z.VII:261; MI.81*:n/a





Femme au divan à tête de femme. Paris. 5-April/1929. Oil on canvas. 14 x 22 cm. Fundación Almine & Bernard Ruiz-Picasso para el Arte.

OPP.29:071; P.IV:178; PP.29:019; Z.VII:270; GS.03:1.15; YB.08*:33

Figure allongée. Paris. 6-April/1929. Oil on canvas. 38 x 46 cm. Private collection.

OPP.29:113; P.IV:180; PP.29:023; Z.VII:240; YB.08*:34



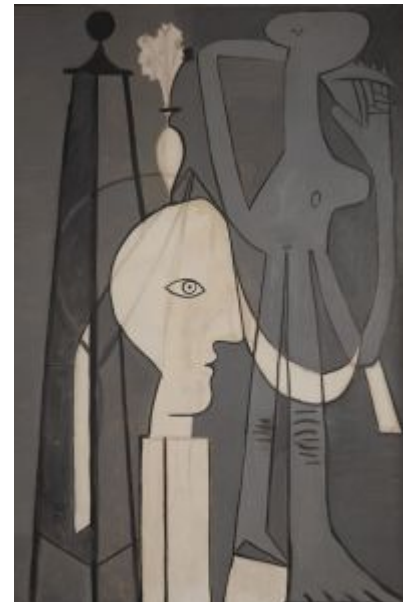


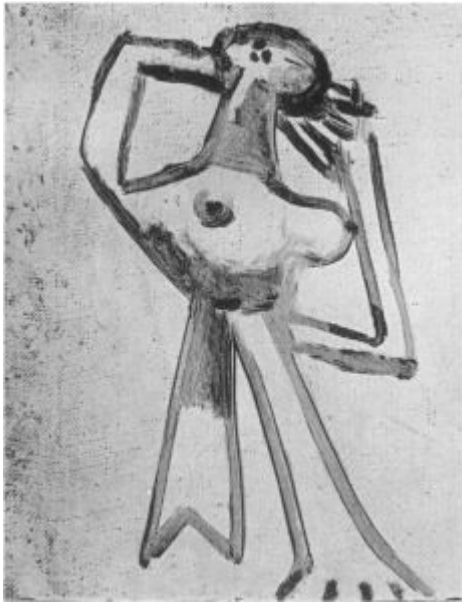
Nu debout au bord de la mer. Paris. 7-April/1929. Oil on canvas. 129,9 x 96,8 cm. The Metropolitan Museum of Art, NYC. (Inv 1996.403.4). Bequest of Florene M. Schoenborn, 1995.

OPP.29:029; P.IV:165; PP.29:026; Z.VII:252; AB.36a*:231; AB.36b*:n/a; AB.57*:66p; AB.65*:27p; AS.60:35; CK.10:310; DR.93*:237; GP.32*:187; GT.10*:77; JR.07:367p; KZ.32*:187; LO.01a*:275p; MA.17*:83p; MF.96:127p; MU.12c*:76; NY.00a*:103p; NY.31g*:15; NY.55i*:119; NY.97b*:18; PA.19f:124p; PH.58*:120; RP.11*:113p; SR.51*:n/a; TB.10*:64; TC.13:3.13; TH.75:130; TK.98a*:73; WR.72*:134p; WW.94*:13

Femme, sculpture et vase de fleurs. Paris. 24-April/1929. Oil on canvas. 195 x 130 cm. Private collection, Switzerland. Formerly Mr. and Mrs. Nathan Cummings Collection, Chicago.

OPP.29:031; P.IV:156; PP.29:028; Z.VII:259; AB.05a*:52; CH.68a*:33; LM.06*:6; PA.19f:124p; TG.94*:91





Femme debout. Paris. 29-April/1929. Oil on canvas [OiC]. 27 x 22 cm. Private collection.

OPP.29:032; P.IV:181; PP.29:029; Z.VII:284; PA.19f:124p

Buste de femme vue de dos (Marie-Thérèse). Paris. 1-May/1929. Graphite on Ingres paper. 23,5 x 30,5 cm. Musée Picasso, Paris. Dation 1979. Sketchbook 18.

OPP.29:110; MPP:1875.34r; P.IV:160; BL.96:38.34r





Baigneuse aux bras levés. Paris. [Spring] May/1929. Oil on canvas. 73 x 60 cm. Phoenix Art Museum. Gift of Allen-Bradley Company of Milwaukee.

OPP.29:037; PP.29:037; Z.VII:255; IC.05*:57; JL.51:76; LO.34a*:n/a; PA.19f:125p; TC.13:5.17; TO.99*:39; UW.91*:25; VO.16*:n/a

Figure: baigneuse à la cabine. Paris. May/1929. Lithograph on wove paper, edition 300. 23,6 x 13,8 cm. Kunstmuseum Picasso, Münster. Also Museum Kunstpalast, Düsseldorf. (Inv K.1963.109); Yale University Art Gallery. (Inv 1969.60.7). Gift of Mr. and Mrs. Walter Bareiss, B.S. 1940s; Werner-Coninx-Stiftung, Zürich.

OPP.29:066; B.I:96; Ba:246; GC:17; AB.39a*:223; FM.70:26; HJ.96:52p; IC.05*:58; MD.02*:174p; MM.04*:132p; MS.04*:n/a; SF.09:9p; VO.16*:63p





Baigneuses. Vallauris. May/1929. White earthenware ceramic vase, decoration in red & black engobes. 47 x 32,5 cm. Musée Picasso, Paris. Dation 1979.

OPP.29:068; MPP:3673; P.IV:198; LO.98d*:n/a; MP.87:434

Vue d'une fenêtre. Paris. 2-May/1929. Oil on canvas. 130 x 195 cm. Sotheby's. #37, N09415, 11/05/15. Formerly Sotheby's. #46, N08741, 05/03/11; Paloma Ruiz-Picasso Collection.

OPP.29:033; P.IV:193; PP.29:030; Z.VII:266; CT.23:105p





Homme couvrant une femme endormie. Paris. 2-May/1929. Graphite on Ingres paper. 23,5 x 30,5 cm. Musée Picasso, Paris. Dation 1979. Sketchbook 18.

OPP.29:091; MPP:1875.35r; P.IV:161; BL.96:38.35r; EC.02:520; JC.01a*:100c; MA.22b:100p

Homme barbu veillant sur une femme endormie. Paris. 4-May/1929. Graphite on Ingres paper. 23,5 x 30,5 cm. Musée Picasso, Paris. Dation 1979. Sketchbook 18.

OPP.29:112; MPP:1875.36r; P.IV:162; BL.96:38.36r; JC.01a*:100b; MA.22b:100p





Femme aux bras levés. Paris. 5-May/1929. Oil on canvas [OIC]. S/U. Private collection.

OPP.29:035; PP.29:035; Z.VII:256; PA.19f:125p

Grand nu au fauteuil rouge (Femme dans un fauteuil).

Paris. 5-May/1929. Oil on canvas. 195 x 129 cm. Musée Picasso, Paris. Dation 1979.

OPP.29:063; MPP:113; P.IV:185; PP.29:034; Z.VII:263; AB.05b*:174; AB.39a*:229; AB.46:161p; AS.60:36; BA.23*:111p; BM.05:175p; DB.89:99p; DD.61:213p; EC.02:452; GA.14:139p; GB.87:120; GC.07:69p; GC.96:206p; GG.87:10p; GP.96:159p; JB.08:135p; JB.65:79; JF.03:7.12; JF.96:113p; JR.07:370p; LN.80:13; LO.22:51p; LP.99:118p; LU.93:15; MG.18:57p; MG.80:137p; MM.00:66p; MP.02*:115; MP.85:99; NC.10:33; NM.95:353p; PA.17b*:184; PA.19f:125p; PA.79a*:166; PD.09:266p; RB.99:36p; RJ.03:17; RK.69:30; RP.60*:119; RP.81:12.5; SG.88:99p; TC.13:1.29; TG.02:56p; TH.75:121; TO.14:62p; UP.00:604; UW.84:100p; WR.80*:273p; WW.91:329p; YB.08:63p; YB.99*:10; YR.00:25p





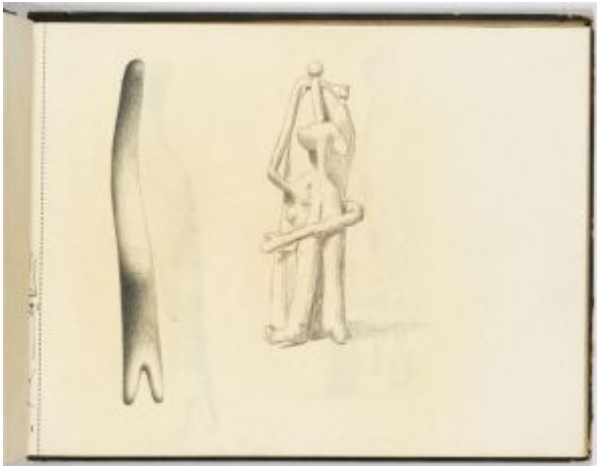
Deux études de la sculpture Femme assise avec détails des mains. Paris. 5~6-May/1929. Graphite on Ingres paper. 23,5 x 30,5 cm. Musée Picasso, Paris. Dation 1979. Sketchbook 18.

OPP.29:036; MPP:1875.37r; P.IV:140; PP.29:036; Z.VII:257; BL.96:38.37r; YB.99*:37

Taureau attaquant un picador (La pique). Paris. 7-May/1929. Copper plate for *La pique (José Delgado alias Pepe Illo, Tauromaquia o el arte de torear a caballo y a pie)*. 19,3 x 27,8 cm. Musée Picasso, Paris. Don des héritiers Picasso en 1982.

OPP.29:153; MPP:1982.38



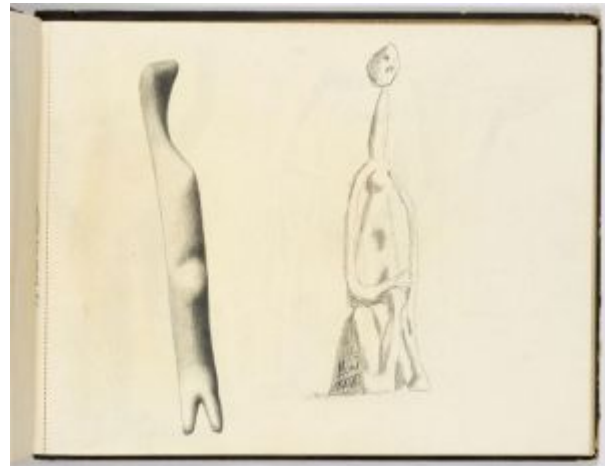


Étude de la sculpture Femme assise avec détail d'une jambe. Paris. 7~8-May/1929. Graphite on Ingres paper. 23,5 x 30,5 cm. Musée Picasso, Paris. Dation 1979. Sketchbook 18.

OPP.29:090; MPP:1875.38r; BL.96:38.38r; EC.02:491; TU.15:110p; YB.08:64p

Étude de la sculpture Femme assise avec le détail d'une jambe. Paris. 10-May/1929. Graphite on Ingres paper. 23,5 x 30,5 cm. Musée Picasso, Paris. Dation 1979. Sketchbook 18.

OPP.29:103; MPP:1875.39r; P.IV:141; BL.96:38.39r





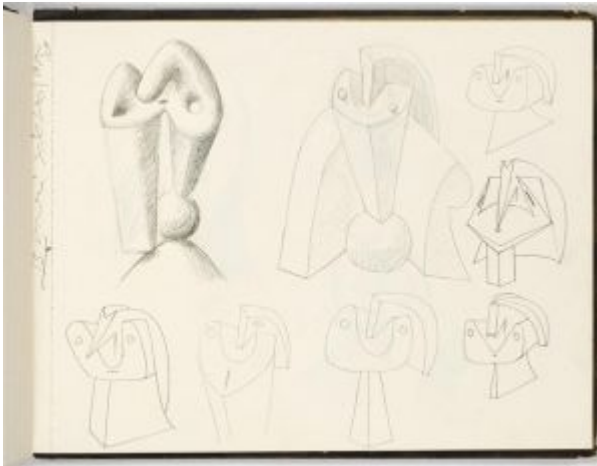
Femme dans un fauteuil (Métamorphose). Paris. 13-May/1929. Oil on canvas. 91,6 x 72,4 cm. Museu Coleção Berardo, Lisbon.

OPP.29:038; P.IV:173; PP.29:038; Z.VII:275; AB.36a*:230; AB.39a*:228; AB.46:160p; BA.03a*:133; CH.34d*:26; GP.32*:185; HT.34*:n/a; KZ.32*:184; MA.17*:41p; NY.30f*:n/a; PA.19f:129p; PA.30d*:n/a; TC.13:4.27; YB.08*:35

Deux études de Femme dans un fauteuil. Paris. 13-May/1929. Graphite on Ingres paper. 23,5 x 30,5 cm. Musée Picasso, Paris. Dation 1979. Sketchbook 18.

OPP.29:142; MPP:1875.55r; BL.96:38.55r





Étude de Figure; étude de Femme dans un Fauteuil; six études de tête. Paris. 13-May~14-June/1929. Graphite on Ingres paper. 24,5 x 31 cm. Musée Picasso, Paris. Dation 1979. Sketchbook 18.

OPP.29:095; MPP:1875.56r; P.IV:108;
BL.96:38.56r

Étude de Grande baigneuse avec détails du corps, des mains et de la position. Paris. 17-May/1929. Graphite on Ingres paper. 23,5 x 30,5 cm. Musée Picasso, Paris. Dation 1979. Sketchbook 18.

OPP.29:086; MPP:1875.40r; P.IV:153;
AB.05b:125; BL.96:38.40r





Personnages. Paris. 19-May/1929. Oil on canvas. 33 x 41 cm. Sotheby's. #51, L16003, 02/03/16.

OPP.29:039; P.IV:183; PP.29:039; Z.VII:277; NY.30f*:n/a; PA.19f:127p; PA.30d*:n/a

Baigneuses à la cabine. Paris. 19-May/1929. Oil on canvas. 33 x 41,5 cm. Musée Picasso, Paris. Dation 1979.

OPP.29:040; MPP:114; P.IV:150; PP.29:040; Z.VII:276; AB.05a*:27; AB.05b*:113; BS.12*:93; JR.07:333p; MP.85:100; PA.17b*:181; PA.19f*:63; PA.79a*:167; RP.11:17p; UP.00:598





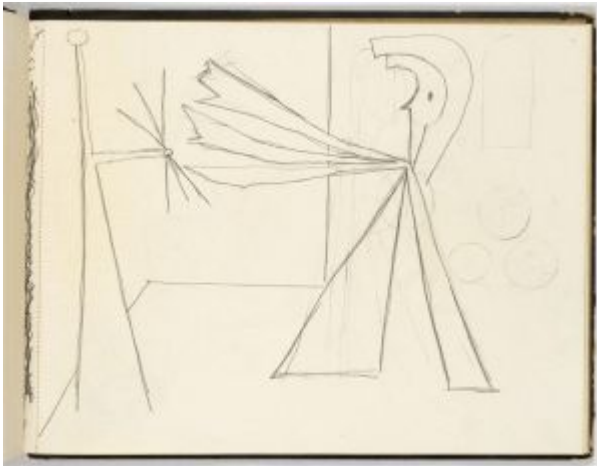
Études de trois peintures: Personnages, Deux personnages et Baigneuses à la cabine. Paris. 19-May/1929. Graphite on Ingres paper. 23,5 x 30,5 cm. Musée Picasso, Paris. Dation 1979. Sketchbook 18.

OPP.29:087; MPP:1875.44r; P.IV:182;
AB.05b:128; BL.96:38.44r

Étude de nus renversés et de têtes pour La crucifixion. Paris. 25-May/1929. Graphite on Ingres paper. 23,5 x 30,5 cm. Musée Picasso, Paris. Dation 1979. Sketchbook 18.

OPP.29:041; MPP:1875.41r; P.IV:216;
PP.29:041; Z.VII:279; AB.05b:126;
AB.69:11a; BL.96:38.41r; GG.86*:98;
NC.10:37; SS.76:299; UW.84:57a





Étude pour La crucifixion. Paris. 25-May/1929. Graphite on Ingres paper. 23,5 x 30,5 cm. Musée Picasso, Paris. Dation 1979. Sketchbook 18.

OPP.29:138; MPP:1875.42r; BL.96:38.42r; LE.21*:377

Études de nus renversés et détail de tête pour La crucifixion. Paris. 26-May/1929. Graphite on Ingres paper. 23,5 x 30,5 cm. Musée Picasso, Paris. Dation 1979. Sketchbook 18.

OPP.29:042; MPP:1875.43r; P.IV:215; PP.29:042; Z.VII:280; AB.05b:127; BL.96:38.43r; GG.86*:98; HC.88:6.42; UW.84:57b





Grande baigneuse. Paris. 26-May/1929. Oil on canvas. 195 x 130 cm. Musée Picasso, Paris. Dation 1979.

OPP.29:043; MPP:115; P.IV:149; PP.29:043; Z.VII:262; AB.05a*:28; AB.39a*:230; AB.46:162p; BA.17*:129p; DD.61:213p; JR.07:n/a; MA.08a*:n/a; MD.02*:175p; MJ.55*:74; MP.85:101; PA.19f*:64; PA.79a*:168; RP.60*:120; SD.05*:57; SP.04*:n/a; TK.04*:n/a; UP.00:597

Étude de Grande baigneuse avec trois détails de mains serrant un voile. Paris. 26-May/1929. Graphite on Ingres paper. 23,5 x 30,5 cm. Musée Picasso, Paris. Dation 1979. Sketchbook 18.

OPP.29:088; MPP:1875.45r; P.IV:152; AB.05b:129; BL.96:38.45r





Toréador et cheval piétinés par un taureau (José Delgado alias Pepe Illo, Tauromaquia o el arte de torear a caballo y a pie). Paris. 28-May/1929. Etching on Japan paper. 19,4 x 27,7 cm. Sotheby's. #414, N07717, 11/02/01.

OPP.29:012; B.I:1315; Ba:139.B; GG.87:22p; JC.01b*:20; PA.07a*:169p; PA.93a*:53

La mort du taureau (José Delgado alias Pepe Illo, Tauromaquia o el arte de torear a caballo y a pie). Paris. 28-May/1929. Etching. 28,2 x 38,2 cm. Musée Picasso, Paris. Dation 1979.

OPP.29:061; MPP:2112; PA.93a*:52





La mort du taureau. Paris. 28-May/1929. Copper plate for *La mort du taureau* (José Delgado alias Pepe Illo, *Tauromaquia o el arte de torear a caballo y a pie*). 19,3 x 27,9 cm. Musée Picasso, Paris. Don des héritiers Picasso en 1982.

OPP.29:150; MPP:1982.35

Torero et cheval piétinés par le taureau. Paris. 28-May/1929. Copper plate for *Toréador et cheval piétinés par un taureau* (José Delgado alias Pepe Illo, *Tauromaquia o el arte de torear a caballo y a pie*). 19,3 x 27,8 cm. Musée Picasso, Paris. Don des héritiers Picasso en 1982.

OPP.29:151; MPP:1982.36





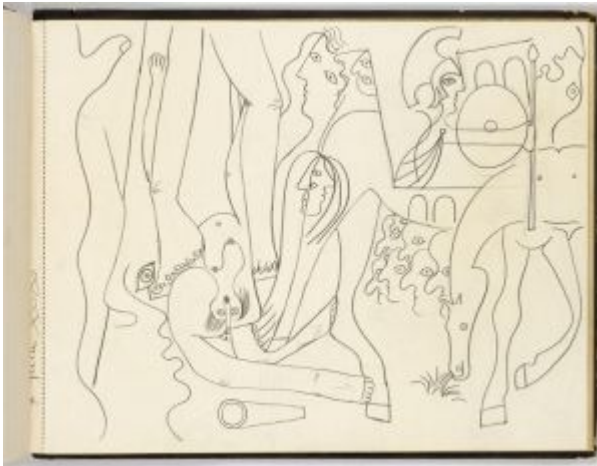
Torero et cheval piétinés par le taureau. Paris. 28-May/1929. Etching. 19,3 x 27,7 cm. Musée Picasso, Paris. Dation 1979.

OPP.29:159; Ba:139; MPP:2113

Tête: projet pour un monument (Metamorphose). Paris. [Spring] [1-June]/1929. Oil on wood [canvas]. 73 x 60 cm. The Baltimore Museum of Art. (Inv 66.41). The Dexter M. Ferry, Jr. Trustee Corporation Fund.

OPP.29:045; P.IV:175; PP.29:045; Z.VII:273; CT.23*:16; EC.02:485; GP.32*:184; HT.34*:68; IC.05*:59; KZ.32*:186; LO.01a*:38p; NY.30f*:n/a; NY.48n*:17; PA.19f*:65; PA.30d*:n/a; TB.10*:63; TC.13:5.2; TG.94*:92; WW.91:327p; YB.08*:25





Étude d'ensemble pour La crucifixion. Paris. 7-June/1929. Graphite on Ingres paper. 23,5 x 30,5 cm. Musée Picasso, Paris. Dation 1979. Sketchbook 18.

OPP.29:048; MPP:1875.47r; P.IV:212; PP.29:048; Z.VII:283; AB.05b:131; BL.96:38.47r; BM.18*:11; GG.86*:98; RK.69:25; UW.84:97p

Coup de corne: torero et cheval blessés (José Delgado alias Pepe Illo, Tauromaquia o el arte de torear a caballo y a pie). Paris. 7-June/1929. Etching. 28 x 19,3 cm. Musée Picasso, Paris. Dation 1979.

OPP.29:057; Ba:140; MPP:2114; PA.07a*:166p; PA.93a*:54





La pique (José Delgado alias Pepe Illo, Tauromaquia o el arte de torear a caballo y a pie). Paris. 7-June/1929. Etching. 28 x 19,3 cm. Musée Picasso, Paris. Dation 1979.

OPP.29:058; B.I:1316; Ba:141; MPP:2115; PA.93a*:55

Étude d'ensemble pour La crucifixion. Paris. 7-June/1929. Graphite on Ingres paper. 23,5 x 30,5 cm. Musée Picasso, Paris. Dation 1979. Sketchbook 18.

OPP.29:089; MPP:1875.48r; AB.05b:130; BL.96:38.48r; UW.84:57d





Coup de corne: torero et cheval blessés. Paris. 7-June/1929.
Copper plate for *Coup de corne: torero et cheval blessés* (José Delgado alias Pepe Illo, *Tauromaquia o el arte de torear a caballo y a pie*). 27,8 x 19,2 cm. Musée Picasso, Paris. Don des héritiers Picasso en 1982.

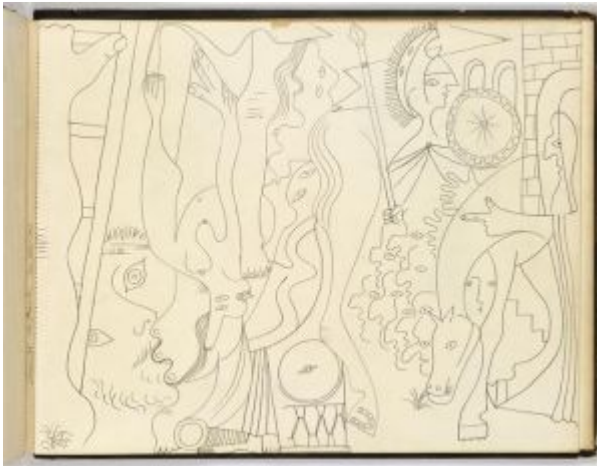
OPP.29:152; MPP:1982.37

Étude de ensemble pour La crucifixion.

Paris. 8-June/1929. Graphite on Ingres paper. 23,5 x 30,5 cm. Musée Picasso, Paris. Dation 1979. Sketchbook 18.

OPP.29:049; MPP:1875.49r; P.IV:219;
PP.29:049; Z.VII:282; AB.05b*:132;
BL.96:38.49r; GG.86*:98; MA.23c:86p;
PA.19f:32p; SS.76:297; UW.84:57c





Étude d'ensemble pour La crucifixion. Paris. 10-June/1929. Graphite on Ingres paper. 23 x 30,5 cm. Musée Picasso, Paris. Dation 1979. Sketchbook 18.

OPP.29:044; MPP:1875.50r; P.IV:214; PP.29:044; Z.VII:281; AB.05b:133; BL.96:38.50r; GG.86*:98; GG.87:87p; JR.07:396p; RJ.03:90; RK.69:26; TH.75:160; UW.84:98p; VR.90:87p

Deux études de Figure pour des projets de monuments. Paris. 10~11-June/1929. Graphite on Ingres paper. 24,5 x 31 cm. Musée Picasso, Paris. Dation 1979. Sketchbook 18.

OPP.29:094; MPP:1875.52r; P.IV:107; BL.96:38.52r; TC.13:5.25





Figure. Paris. 11-June/1929. Oil on canvas [Oic]. 92 x 73 cm.
Private collection. Formerly Georges Wildenstein Collection.

OPP.29:046; P.IV:176; PP.29:046; Z.VII:274; BA.36*:n/a;
GP.32*:182; JC.40:136p; KZ.32*:185; NY.30f*:n/a;
PA.19f:130p; PA.30d*:n/a; TC.13:5.23

**Étude de figure; figure à la draperie;
détail du tissu.** Paris. 11~12-June/1929.
Graphite on Ingres paper. 23,5 x 30,5 cm.
Musée Picasso, Paris. Dation 1979.
Sketchbook 18.

OPP.29:092; MPP:1875.53r; BL.96:38.53r





Quatre études de Femme dans un fauteuil. Paris. 13-June/1929. Graphite on Ingres paper. 23,5 x 30,5 cm. Musée Picasso, Paris. Dation 1979. Sketchbook 18.

OPP.29:141; MPP:1875.54r; BL.96:38.54r

Le baiser, fond rouge. Paris. 14-June/1929. Oil on canvas. 61 x 46 cm. Catherine Hutin-Blay Collection, Paris. Formerly Jacqueline Roque Picasso Collection.

OPP.29:047; PP.29:047; Z.VII:268; BA.03a*:135; HN.00*:103; LM.17*:n/a; MR.03*:63p; PA.19f:132p





Trois études de tête de femme dans un fauteuil. Paris. 14-June/1929. Graphite on Ingres paper. 23,5 x 30,5 cm. Musée Picasso, Paris. Dation 1979. Sketchbook 18.

OPP.29:143; MPP:1875.57r; BL.96:38.57r

Figure. Paris. 19-June/1929. Oil on canvas. 33 x 41 cm. Christie's. #5B, 12145, 11/16/16.

OPP.29:050; PP.29:050; Z.VII:264; AB.05b:77; NY.30f*:n/a; PA.30d*:n/a



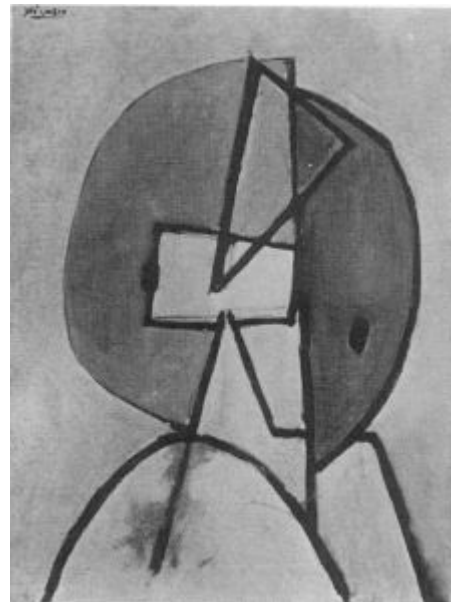


Deux personnages. Paris. [19-May] 19-June/1929. Oil on canvas. 33.5 x 41 cm. Private collection, Nordrhein-Westfalen. Formerly Sotheby's. #43, L17003, 03/01/17.

OPP.29:051; P.IV:184; PP.29:051; Z.VII:271; AO.04*:n/a; NY.30f*:n/a; PA.19f:127p; PA.30d*:n/a; RN.03*:n/a

Figure. Paris. 19-June/1929. Oil on canvas [Oic]. S/U. Private collection.

OPP.29:052; PP.29:052; Z.VII:295; PA.19f:132p





Tête sur fond bleu. Paris. 19-June/1929. Oil on canvas. 41 x 33 cm. Private collection.

OPP.29:053; PP.29:053; Z.VII:296; BA.03a*:137;
MG.03b*:16; PA.19f:132p

Vase globulaire décoré de mains tenant des poissons. Paris. 30-June/1929. Terracotta. 22 x 27,5 cm. Musée Picasso, Paris. Dation 1979.

OPP.29:156; MPP:3674; MP.85:435





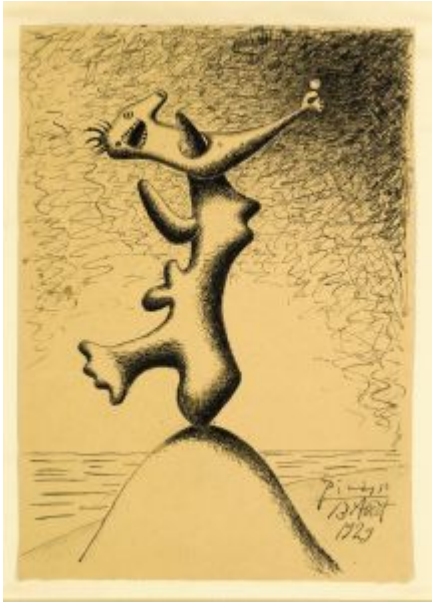
Portrait de Paulo en Pierrot. Paris. 12-July/1929. Oil on canvas. 130,4 x 97,3 cm. Pola Museum of Art, Hakone, Kanagawa, Japan.

OPP.29:002; P.IV:186; PP.29:054; Z.VII:278; BS.55:215p; DO.07*:191; GP.32*:188; HK.65:100p; HN.13:185p; KZ.32*:189; MA.86*:16; MI.53*:57; MM.85a*:16; TI.71:32; WS.94:63p; WS.95a:246p

Le baiser. Dinard. [August]/1929. Oil on canvas. 22 x 14 cm. Private collection.

OPP.29:125; HN.00*:104; PA.19f:133p





Baigneuse au ballon. Dinard. 13-August/1929. Pen & ink on paper. [31 x 23] 33,3 x 23,7 cm. Pieter and Olga Dreesmann Collection, London. (Inv A022). Formerly Sotheby's. #38, N09219, 11/04/14; Collection O. T. V. S; Sotheby's. #5, L00107, 12/04/00.

OPP.29:067; IC.05*:60; WS.07:26p

Portrait de la famille de Max Jacob: la mère de Max Jacob, sa soeur Delphine et son frère Gaston. Quimper. 15-August/1929. Contretype of a lost original. 5,9 x 10 cm. Musée Picasso, Paris. Don de Madame Hélène Henry.

OPP.29:158; MPP:1994.2





Figure sur une plage. Dinard. 16-August/1929. Ink. 30 x 37,5 cm. Private collection.

OPP.29:054; PP.29:055; G.99:1

Femme couchée. Dinard. 16-August/1929. Oil on canvas. 15,5 x 21,5 cm. Private collection.

OPP.29:081; P.IV:189; PP.29:056; Z.VII:285; JR.85*:65





Femme couchée. Dinard. 18-August/1929. Oil on canvas. 15,5 x 21,5 cm. Private collection.

OPP.29:064; P.IV:190; PP.29:057; Z.VII:286; JR.85*:66

Études: femme allongée et têtes. Dinard. 18~23-August/1929. Ink on paper. 30 x 37,5 cm. Private collection.

OPP.29:082; P.IV:192; PP.29:058; GG.86*:3





Femme couchée. Dinard. 23-August/1929. Oil on canvas. 16 x 22 cm. The Picasso Estate.

OPP.29:006; P.IV:188; PP.29:059; DD.61:77p; JR.85*:67

Tête. Paris. 23-August/1929. Oil on canvas. 23 x 17,2 cm. Christie's. #368, 2890, 11/06/14.

OPP.29:102; PA.19f:133p; SF.48d*:117p



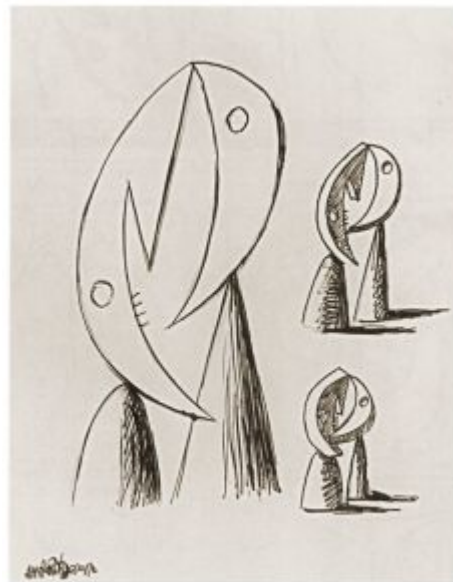


Femme étendue sur la plage. Dinard. 24-August/1929. Oil on canvas. 14,1 x 23,7 cm. Musée Picasso, Paris. Dation 1979.

OPP.29:065; MPP:116; PP.29:060; DD.61:123p; MP.85:102; PA.79a*:169; YB.08*:37

Études: têtes. Dinard. 24-August/1929. Ink on sketchbook paper. 30 x 37,5 cm. Private collection.

OPP.29:164; PP.29:061; GG.86*:99.4p



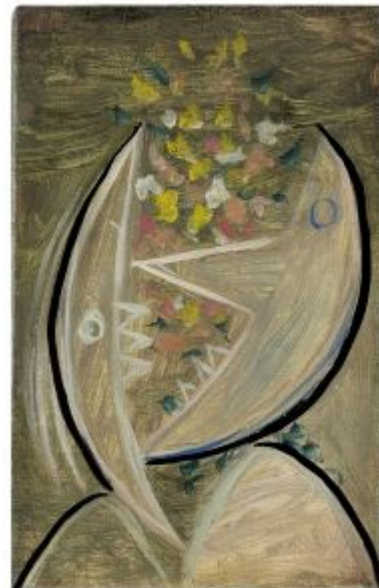


Le baiser. Dinard. 24-August/1929. Oil on canvas [OIC]. 22 x 14 cm. Private collection.

OPP.29:165; PP.29:062; DD.61:214p

Baiser. Dinard. 25-August/1929. Oil on canvas. 22 x 14 cm. The Picasso Estate. (Inv 12529).

OPP.29:072; PP.29:064; DD.61:214p; PA.19f:133p; YB.08*:38





Le baiser. Dinard. 25-August/1929. Oil on canvas. 22 x 14 cm.
Musée Picasso, Paris. Dation 1979.

OPP.29:074; MPP:117; PP.29:063; HN.00*:106; JC.01a*:99;
JR.07:380p; MA.08a*:n/a; MI.18*:n/a; MP.85:103; PA.19f*:66;
PA.79a*:170; PD.09:264p; TE.21*:172; TK.04*:n/a; UP.00:602

Femme au ballon. Dinard. 31-August/1929. Oil on canvas. 21,4 x
11,5 cm. Sotheby's. #21, PF9006, 05/28/09.

OPP.29:085





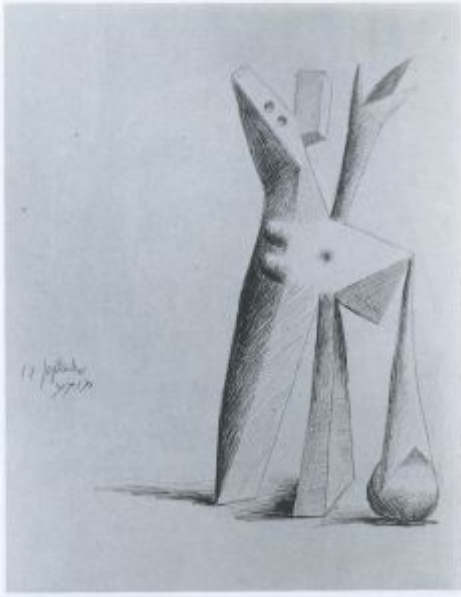
Baigneuse au ballon. Dinard. 1-September/1929. Oil on canvas. [21,8] 21,9 x 14 cm. Musée Picasso, Paris. Dation 1979.

OPP.29:008; MPP:118; PP.29:065; AB.05a*:32; AB.97b*:225; DD.61:214p; JR.07:381p; LM.06:48; MA.08a*:n/a; MP.85:104; PA.02f*:n/a; PA.79a*:171; WR.80*:272p; WR.96:215p

Étude pour Baigneuse au ballon: figures debout. Paris. 16-September/1929. Ink on paper. 30 x 37,5 cm. Private collection.

OPP.29:101; PP.29:066; GG.86*:99.5; YB.08:65p





Femme. Dinard. 17-September/1929. Pencil on paper. 30 x 37,5 cm. Private collection.

OPP.29:115; SP.96:11

Baigneuse au ballon. Dinard. 18-September/1929. Pen & brown ink on a sheet folded in four. 16,5 x 10,5 cm. Musée Picasso, Paris. Dation 1979.

OPP.29:078; MPP:1032; PP.29:067; AB.05a*:31;
AB.05b*:n/a; RJ.01*:n/a





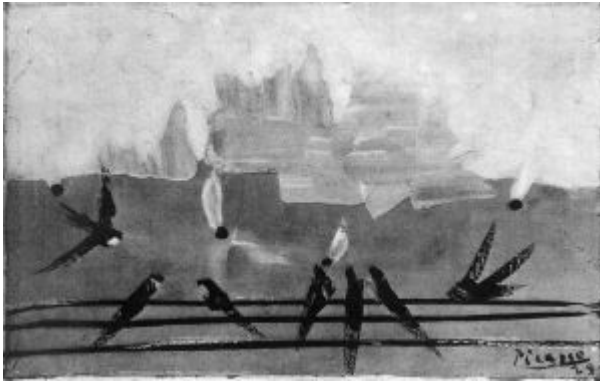
Compotier avec fruits. Dinard. 20-September/1929. Pencil & brown pastel on sketchbook paper [OïC]. 30 x 37,5 cm. Private collection.

OPP.29:166; PP.29:068; GG.68*:99.6p

Le peintre et son modèle. Paris. Fall/1929~Winter/1930. Lithograph. 23,5 x 29,1 cm. Musée Picasso, Paris. Dation 1979.

OPP.29:160; Ba:247; MPP:3280





Le départ des hirondelles. [Paris]. [Late-Fall]/1929. Oil on canvas [OiC]. 14 x 22 cm. Private collection.

OPP.29:116; P.IV:194; PP.29:070; Z.VII:265

Femme nue couronnée de fleurs (José Delgado alias Pepe Illo, Tauromaquia o el arte de torear a caballo y a pie). Paris. 19-October/1929. Etching. 28 x 19,5 cm. Musée Picasso, Paris. Dation 1979.

OPP.29:157; B.I:97; Ba:142; MPP:2116





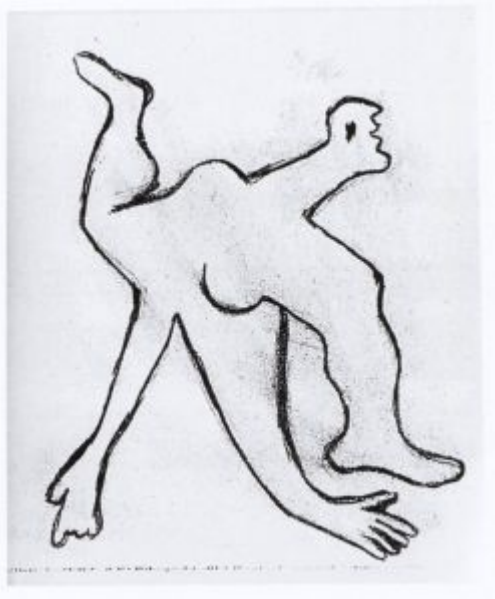
L'crobate. Paris. November/1929. Charcoal & oil on canvas. 162 x 130 cm. Musée National d'Art Moderne, Centre Georges Pompidou, Paris. On loan from Musée Picasso, Paris. Jacqueline Roque Picasso Collection. Dation 1990.

OPP.29:001; MPP:1990.15; P.IV:208; PP.29:069; GL.84*:18; GR.90*:12; MM.85a*:17; MR.16*:n/a; MT.02*:n/a; PA.17b*:118; PA.21f*:136; SD.05*:56; TK.04*:n/a; WW.91:331p; YB.99*:31

La nageuse. Paris. November/1929. Oil on canvas. 130 x 162 cm. Musée Picasso, Paris. Dation 1979.

OPP.29:004; MPP:119; P.IV:211; PP.29:071; Z.VII:419; AB.05b*:117; AB.39a*:235; AB.46:164p; DD.61:214p; DO.07:21p; GP.96:159p; JR.07:388p; JR.10:248p; MP.85:105; PA.17b*:185; PA.21e*:379; PA.79a*:172; PK.99:4; RS.88:96p; SS.76:157; UP.00:606; WR.80*:271p; WW.91:331p





L'Acrobate. Paris. [November]/1929. Pencil on paper. 24,5 x 20,5 cm. The Picasso Estate.

OPP.29:122; PP.30:006; GR.90:42p

La fenêtre ouverte. Paris. 22-
November/1929. Oil on canvas. 130,5 x
163,4 cm. Helly Nahmad Collection,
Monaco/London. Christie's. #108, 20839,
03/01/22; Staatsgalerie Stuttgart. (Inv L
1346). Sammlung Steegmann, Stuttgart.

OPP.29:062; P.IV:197; PP.29:072;
Z.VII:288; AB.05a*:21; BA.23*:143p;
BS.74*:37; BS.76c*:55; GP.32*:189;
JB.92:202p; JR.07:n/a; KZ.32*:190;
LG.81:319; PA.02f*:n/a; PA.19f:135p;
SG.12*:29; SG.98a*:9; SG.98b*:n/a;
SS.76:144; TB.10*:62; WR.68*:181





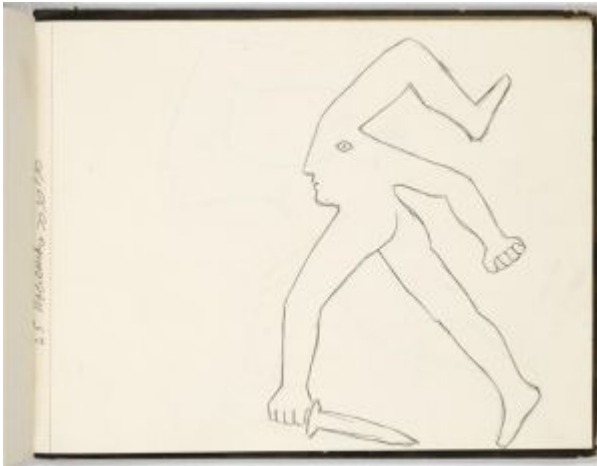
Tête de Marie-Thérèse. Paris. 22-November/1929. Oil on wood panel. 64 x 47 cm. Private collection.

OPP.29:117; P.IV:196; PP.29:073; Z.VII:311; JR.07:401p; PA.19f:136p; RK.69:29; UW.84:99p

Acrobate au poignard. Paris. 25-November/1929. Graphite on Ingres paper. 23,5 x 30,5 cm. Musée Picasso, Paris. Dation 1979. Sketchbook 18.

OPP.29:075; MPP:1875.60r; AB.05a:47; BL.96:38.60r





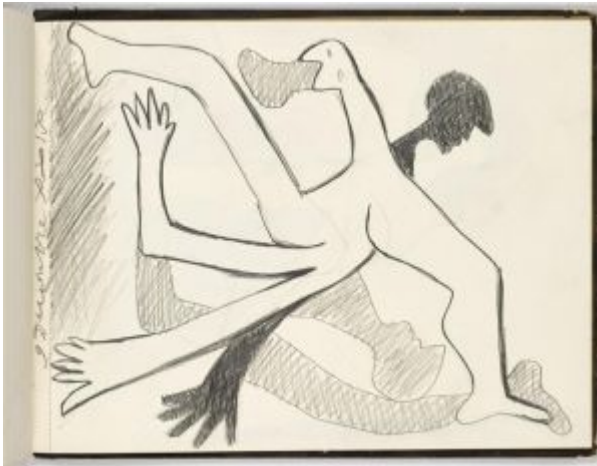
Acrobate au poignard. Paris. 25-
November/1929. Graphite on Ingres paper. 23,5 x
30,5 cm. Musée Picasso, Paris. Dation 1979.
Sketchbook 18.

OPP.29:076; MPP:1875.59r; AB.05b:134;
BL.96:38.59r; TE.21*:179

**Acrobate; études de détails de La
Fenêtre ouverte.** Paris. 25-
November/1929. Graphite on Ingres paper.
23,5 x 30,5 cm. Musée Picasso, Paris.
Dation 1979. Sketchbook 18.

OPP.29:144; MPP:1875.58r; BL.96:38.58r



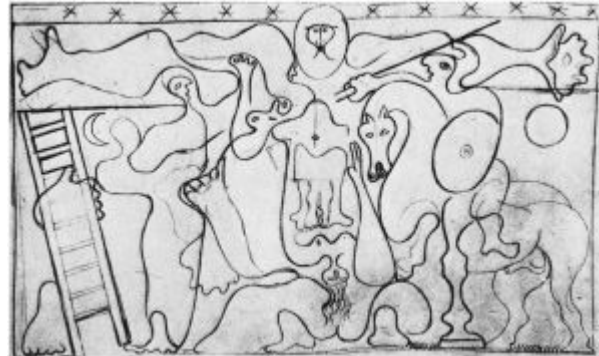


Acrobates. Paris. 9-December/1929. Graphite on Ingres paper. 23,5 x 30,5 cm. Musée Picasso, Paris. Dation 1979. Sketchbook 18.

OPP.29:077; MPP:1875.61r; AB.05a:49; BL.96:38.61r

La crucifixion (Étude) (d'après Grünewald). Paris. [1926] [1927] Winter/1929~1930 [~1931]. Pencil in sketchbook. 24,5 x 31 cm. Private collection.

OPP.29:007; P.IV:221; PP.29:080; Z.VII:315; EF.88:133p; GG.86*:98; GG.87:85p; LU.93:50; PK.99:3; RK.69:28; SS.76:294; UW.84:99p





Crucifixion. Paris. [Early/1927]
Winter/1929~1930 1930~1931]. Pencil on paper.
S/U. Private collection.

OPP.29:162; P.IV:222; PP.29:081; Z.VII:316;
GG.87:85p; HC.88:6.51; SS.76:295

Tête de femme. Paris. 27-December/1929 [31-
January/1930]. Oil on wood panel. 64 x 47 cm.
Pinakothek der Moderne, München.

OPP.29:055; PP.29:075; Z.VII:305; PA.19f:138p



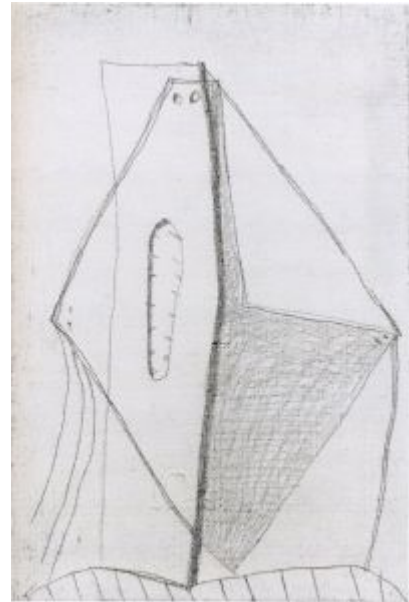


Buste de femme. Paris. 27-December/1929. Oil on wood panel. 70,5 x 40 cm. Private collection.

OPP.29:080; P.IV:195; PP.29:074; Z.VII:292; DP.20:222p;
MD.02*:177p; PA.19f:136p

Tête triangulaire. Paris. 1929. Pencil & wash on canvas. 16 x 24 cm. Private collection.

OPP.29:084; LE.07*:40





Mère et enfant. Paris. 1929. Etching & aquatint with roulette in brown & blue [After *Mère et enfant*]. 52,1 x 43,2 cm. Gemeentemuseum Den Haag. (Inv 0272752). Also Christie's. #0270, 1990, 04/29/08.

OPP.29:100

Marie-Thérèse Walter au béret. Paris. 1929. Crayon. S/U. Private collection.

OPP.29:121; MD.02:164p





Le baiser. Paris. 1929. Oil on canvas. 22 x 14 cm. Private collection.

OPP.29:124; HN.00*:102; PA.19f:133p

2e de couverture. Paris. 1929. Mixed media. 24,5 x 31 cm. Musée Picasso, Paris. Dation 1979. Sketchbook 18.

OPP.29:135; MPP:1875.c2; BL.96:38.c2





Figure. Paris. 1929~1930. India ink on wood panel. 22,8 x 47 cm. Private collection, Switzerland. Courtesy De Pury & Luxembourg, Zürich.

OPP.29:056; PP.29:076; Z.VII:253; KB.01*:99

Tête de femme. Paris. 1929~1930. Sheet metal engraving on Montval Vergé paper. 41,5 x 20,8 cm. Musée Picasso, Paris.

OPP.29:059; MPP:2982





Tête de femme. Paris. 1929~1930. Painted iron, sheet-iron, springs & colanders. 100 x 37 x 59 cm. Musée Picasso, Paris. Dation 1979.

OPP.29:073; MPP:270; P.IV:100; PP.29:079;
WS:81; AB.05a*:99; AB.12*:164p; BA.03a*:130;
BA.18*:182-183p; BS.55:126; CG.12:25p;
EC.09:27; EM.55:176p; GB.87:131; GC.96:210p;
GP.32*:n/a; GP.96:170p; HF.07b:333p;
IW.93:47p; JO.06*:n/a; JR.07:421p; LU.93:25;
MA.08a*:n/a; MA.17*:84p; MA.22b*:58;
MF.06*:74; MI.53*:185; MN.80*:n/a; MP.85:311;
MS.00b:470p; PA.02f*:n/a; PA.19e*:8;
PA.19f*:50; PA.21g*:125p; PA.79a*:187;
PD.09:270p; RJ.01*:n/a; RP.81:12.6;
RS.88:191p; SD.05*:63; SP.04*:n/a; SY.11*:n/a;
TG.94:214p; TH.75:139; TK.04*:n/a; TU.15*:40;
UP.00:615; WR.80*:283p; WW.91:322p;
YB.08:79p

Tête de femme. Paris. 1929~1930. Engraving. 41,5 x 20,8 cm. Musée Picasso, Paris.

OPP.29:154; MPP:2981





Tête de femme. Paris. 1929~1930. Engraving on Montval Vergé paper. 41,5 x 20,8 cm. Musée Picasso, Paris.

OPP.29:155; MPP:2983

Le peintre et son modèle. Paris. 1929~1930. Lithograph on Arches, edition 50. 23,5 x 29 cm. Christie's. #209, 7096, 11/29/05; Mr. & Mrs. Emerson Woelffer Collection.

OPP.29:161; B.I:98; Ba:247.B; GC:18; P.IV:224; DK.61*:131; FM.70:27; MF.10*:197p

